

General Accessories

General Accessories

General Accessories

Installed

Drip Shield Kit

- Easily installed on Type 12, 4 and 4X wall-mount enclosures using stainless steel bolts and sealing washers (included).
- Designed not to interfere with door clamps.
- Protects door from dripping water and settling dust.
- Constructed in 14 gauge mild steel (painted) or 316 stainless steel
- Maintains enclosure rating



| Painted Steel (Gray) Part Number | Painted Steel (Lt. Gray) Part Number | Stainless Steel Part Number | Fits Enclosure Width (inches) |
|-------------------------------------|---|--------------------------------|----------------------------------|
| DK12GY | DK12LG | DK12S16 | 12.00 |
| DK16GY | DK16LG | DK16S16 | 16.00 |
| DK20GY | DK20LG | DK20S16 | 20.00 |
| DK24GY | DK24LG | DK24S16 | 24.00 |
| DK30GY | DK30LG | DK30S16 | 30.00 |
| DK36GY | DK36LG | DK36S16 | 36.00 |
| DK42GY | DK42LG | - | 42.00 |
| DK48GY | DK48LG | - | 48.00 |
| DK60GY | DK60LG | - | 60.00 |
| DK72GY | - | - | 72.00 |



Ground Wire Kits

- Stranded #10 gauge copper wire with ring terminal .256 dia hole
- Includes mouting nuts both 1/4 20 and 10-32 ground studs
- Ground symbols (2 for each jumper)

| Part No. | Description |
|----------|-------------|
| GRDKIT01 | Quantity 2 |
| GRDKIT02 | Quantity 6 |



Door Support Guide

- Designed for use when heavy loads or uneven mounting surfaces changes door alignment
- Field installable kit
- Can be used on Hammond Eclipse and 1418 Series wall mount enclosures, all freestanding and floor mount enclosures - both painted and stainless steel
- Kit includes all necessary hardware and installation instructions
- Sealing washers included maintain enclosure integrity

| Part No. | DSG1 |
|----------|------|
| | |



General Accessories

Light Kits



Magnet mount not included - must be ordered separately.



Fluorescent Light Kit & Accessories

- Light kits are offered in 18", 24" and 48" widths.
- CSA and UL component recognized.
- Operating voltage 115 AC 60Hz
- Features a manually operated switch, 115V convenience outlet, durable plastic lens, and 6 foot power cord (without plug).
- Can mount into light mounting channel, bolt through enclosure or by using magnet strip (available separately - see chart below.)
- Magnet mount can be used with mild steel enclosures only.
- Remote door switch available separately for automatic activation.
- Finished in white.
- Use standard 18", 24" or 48" T8 fluorescent bulb (not included)

| Part No. | Description |
|----------------------------|----------------------------------|
| FLK18T8¹ | 18" Fluorescent Light Kit |
| FLK24T8¹ | 24" Fluorescent Light Kit |
| FLK48T8¹ | 48" Fluorescent Light Kit |
| FLK18MM | Magnet mount for 18" and 24" kit |
| FLK48MM | Magnet mount for 48" light kit |

¹ T8 fluorescent bulb not included



LED light kits

- Available in 9", 17.5", 26", 34.5" and 38.5" lengths
- Operating voltage 100/240V AC 50/60Hz Operating temperature -20 C to + 50 C
- Long lamp life 60,000 hours in warm white color temperature
- No remote power supplies as unit comes with its own integral LED drivers
- Hard wired via multiple knockouts in light weight extruded Aluminum frame finished white with manual operated switch
- Hinged glass diffuser allows easy access to replaceable LED module
- Remote door switch available separately for automatic activation

| Part No. | Description | Number LED | |
|-----------------|---------------------|------------|------------|
| | | Modules | Energy Use |
| FLK5LED | 9" LED Light Kit | 1.00 | 4.4 w |
| FLK7LED | 17.5" LED Light Kit | 2.00 | 7.2 w |
| FLK10LED | 26" LED Light Kit | 3.00 | 9.8 w |
| FLK15LED | 34.5" LED Light Kit | 4.00 | 15.0 w |
| FLK17LED | 38.5" LED Light Kit | 5.00 | 17.0 w |



FDS1

FLKDS



Remote Door Switch

- Permits convenient door activated on-off function of lights & air conditioners.
- Can be wired normally open or normally closed.
- 115/230 V AC

| Part No. | For use with |
|--------------|----------------------------|
| FLKDS | 1418, 1422, 1447, 2UD, UHD |
| FDS1 | Eclipse, HME |

General Accessories

General Accessories

General Accessories



Touch-Up Spray Paint

- For use in matching standard Hammond colors.
- Provided in 12 oz. spray cans.

Touch Up - Spray Can

| Part No. | Color |
|------------|---------------------|
| 1413BKLGS | Black - Low Gloss |
| 1413BKS | Black |
| 1413CGRALS | Beige RAL 7032 |
| 1413LRS | ANSI 61 Gray |
| 1413NS | White |
| 1413LGS | Light Gray RAL 7035 |
| 1413WH9003 | White RAL 9003 |



Casters

- Packaged in sets of four.
- 800 lb. load capacity per set.
- 4" swivel casters with brakes.
- Features zinc plated ball bearing pivot, composite wheels.

Part No. **1425D**



1425 Series Casters

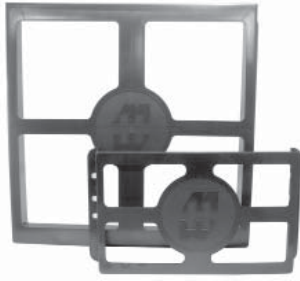
- Packaged in sets of four.
- Feature ball bearing, swivel and hard composition wheels.
- Available for 3 weight capacities.

| Part No. | Mfg. Specified Capacity (Set of 4) | Wheel Diameter (inches) |
|----------|------------------------------------|-------------------------|
| 1425B | 360 | 3.0 |
| 1425BM | 700 | 3.0 |
| 1425BH | 1050 | 3.0 |



General Accessories

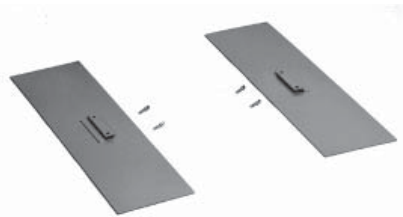
General Accessories



Literature Pocket Kit

- For use as additional or replacement literature pockets.
- Kit includes pocket, high strength two-sided adhesive tape and surface preparation swab.
- Plastic pocket is black.
- Packaged individually.

| Part No. | Height | Width | Depth |
|----------------|--------|-------|-------|
| PKT66 | 6 | 6 | 0.75 |
| PKT99 | 6 | 9 | 0.75 |
| PKT1212 | 12 | 12 | 2.50 |



Enclosure Stabilizers

- Prevents floor mounted enclosures from falling over while being worked on before they are bolted to the floor.
- Install by slipping under enclosure mounting foot and tightening two thumb screws.
- Finished in gray.

| Part No. | Overall Dimensions |
|------------------------|--------------------|
| 1481ES (1 pair) | 8 x 30 |



Panel Lifting Handles

- Used for lifting, transporting and installing panel assemblies in enclosures that are positioned horizontally.

| Part No. | 1481H |
|----------|-------|
| | |



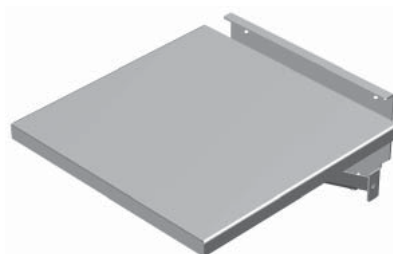
Neoprene Gasket Kit - NEMA 12 Enclosures

- Self-adhesive cellular neoprene gasket for NEMA 12 enclosures.
- Supplied in 10 foot rolls, 0.19" x 0.75".

Urethane Gasket Kit - NEMA 4, 4X Enclosures

- Self adhesive microcell urethane gasket for NEMA 4, 4X enclosures.
- Supplied in 10 foot rolls, 0.25" x 0.75".

| Part No. | Material | For NEMA Type |
|-------------------|----------|---------------|
| 1481DJ10 | Neoprene | 12 |
| 1481DJN410 | Urethane | 4, 4X |



Fold Down Shelf

- Supports various equipment used temporarily to service/program switchgear inside enclosures.
- Mounts with bolts through doors or sides.
- Weight capacity 100 lbs.
- Finished in ANSI 61 Gray.

| Part No | Work Surface (In.) | |
|------------------|--------------------|----|
| | W | D |
| FDS1212GY | 12 | 12 |
| FDS1818GY | 18 | 18 |

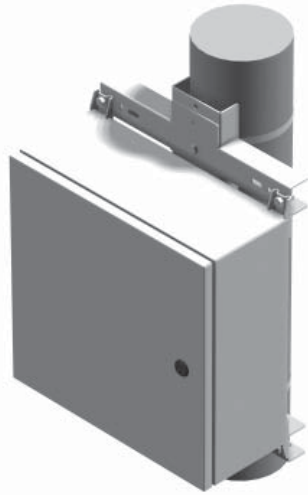


General Accessories

General Accessories

Pole Mounting Kit

- Designed to mount outdoor rated enclosures - Hammond 1414N4, Eclipse, Eclipse Junior and 1418N4 Series
- Individual components allows user to choose mounting configuration and/or components to purchase
- Vertical channel can be lagged directly to pole or attached using optional stainless steel straps
- Vertical channel prevents enclosure from twisting
- Can be used on pole diameters from 4" and up
- Horizontal rails sold in pairs and comes with all hardware needed to secure the enclosure to the rails
- Stainless straps sold in quantities of 4
- PMSTRAP40 straps are rated for 450 lbs each and can be used for pole diameters up to 10"
- PMSTRAP55 straps are rated for 250 lbs each and can be used for pole diameters up to 15"



General Accessories



Vertical Steel Channel



Horizontal Steel Channel



Straps

| Part No. | Description | Use with Hammond Series | | | |
|------------------|--|-------------------------|---------------------|---------------------|---------------------|
| | | 1414N4 | Eclipse Junior (EJ) | 1418N4 | Eclipse (EN4SD) |
| PMV1216GY | Vertical Steel Channel - Qty 1 | 12"-16" encl height | 12"-16" encl height | 12"-16" encl height | 12"-16" encl height |
| PMV2024GY | Vertical Steel Channel - Qty 1 | N/A | N/A | 20"-24" encl height | 20"-24" encl height |
| PMV3036GY | Vertical Steel Channel - Qty 1 | N/A | N/A | 30"-36" encl height | 30"-36" encl height |
| PMV4248GY | Vertical Steel Channel - Qty 1 | N/A | N/A | 42"-48" encl height | 42"-48" encl height |
| PMH15GY | Horizontal Steel Channel - Qty 2 | 12"-16" encl width | 12"-16" encl width | 12"-20" encl width | 12"-20" encl width |
| PMH25GY | Horizontal Steel Channel - Qty 2 | N/A | N/A | 24"-30" encl width | 24" encl width |
| PMH35GY | Horizontal Steel Channel - Qty 2 | N/A | N/A | 36" encl width | 30"-36" encl width |
| PMSTRAP40 | 0.50" x 39" length 316 stainless strap - Qty 4 | | | | |
| PMSTRAP55 | 0.31" x 55" length 316 stainless strap - Qty 4 | | | | |

General Accessories

General Accessories



PJ Pole Mounting Kit

- Eight sizes cover PJU & PJ up to 30x24
- Adjustable steel band allows mounting on pole diameters up to 15"
- Adaptable pole mounting on round, square and rectangular shapes
- Minimal assembly with fewer parts for installation
- Corrosion protection for long outdoor life

| Pole Mount Kit Part No. | Use with PJ Series (including all variations) | Use with PJU Series (including all variations) |
|-------------------------|---|--|
| PJPOLEMNT8 | PJ864,PJ1084,PJ1086 | PJU1084 |
| PJPOLEMNT10 | PJ1084,PJ1086, PJ12106 | PJU12106 |
| PJPOLEMNT12 | PJ12106, PJ14126 | PJ14126 |
| PJPOLEMNT14 | PJ14126, PJ16148 | PJU16148 |
| PJPOLEMNT16 | PJ16148, PJ18168, PJ20168 | PJU181610, PJU201610 |
| PJPOLEMNT20 | PJ242010 | Not available |
| PJPOLEMNT24 | PJ241010, PJ242410, PJ302410 | Not available |